

**FULL RANGE 2025**  
CATALOG



**AGRICULTURE**

**DIECI**



# CONTINUOUS EVOLUTION

Constantly ahead in terms of technological solutions, Dieci continues the evolutionary process of its vehicles, raising the standards even higher with the **New Agriculture Range**.

**Reliability, efficiency and comfort** have reached unprecedented levels through improved design and instrumentation and the introduction of **patented, futuristic innovations**.

New **Stage V** engines on the whole range, **360° suspended cab** and **new interior, more intuitive and functional diagnostics and controls**, **new chassis** and **new transmissions**, bring tomorrow's agricultural telehandlers into the field today.

# SUSPENDED CAB



**EXCLUSIVE DIECI**

## ZERO SHOCK SYSTEM

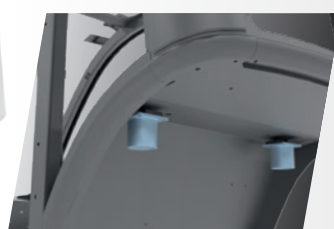
**New cab shock-absorbing system**, unique in the telehandler sector, capable of effectively dampening the most annoying oscillations on the roughest terrain.

**The hydraulic suspension of the cab** effectively reduces oscillations and offers a high driving comfort.

The cab is provided with a shock absorption system, with integrated adjustment, consisting of **4 supports that absorb impacts and jolts in every direction**: lateral, vertical, rear and front.



Front Silent Blocks



Rear hydraulic shock absorbers

### MORE VALUE

- New Cab by Giugiaro Design
- Refined soft-touch interiors, derived from the automotive industry

### MORE LEGROOM

- Improved ergonomics and accessibility
- More space for the operator's legs

### MORE COMFORT

- Adjustable steering column and armrest
- Heated seat, 3 suspension system options
- Soundproofing roof, dashboard and mat

### MORE VISIBILITY

- Large windows
- Integrated LED worklights - Headlights on the perimeter, on the boom and on the boom head
- 3 wireless cameras - 7" color graphic display
- Electrically adjustable heated wing mirrors

### BETTER CLIMATE CONTROL

- Optimized air flows: 6 vents available
- Rear glass and openable roof
- Integrated electric lateral window
- Quick demisting of the windows
- Double air filter
- Operator protected against dust and odors



# TRANSMISSION

**5 SYSTEMS AVAILABLE  
ALWAYS IMPECCABLE WORK**

## SINGLE-SPEED HYDROSTATIC

### EFFICIENCY GUARANTEED OVER TIME

**MORE POWERFUL** **EASIER** **MORE RELIABLE** **MORE SAVINGS**

- **Extremely high performance:** best speed-power ratio maintained in all working conditions
- **Guaranteed traction and speed,** with no need to change gear
- Up to 38 Km/h at progressive speed: **unrivalled fluidity of movement** and **millimetric precision** in small movements
- Electronic accelerator and Inching pedal: **slow and controlled movement,** even with the boom at full power
- **Great comfort:** no gear changes, no jolts

Mini Agri | Mini Agri Smart | Agri Star

## DUAL SPEED HYDROSTATIC

- **Electronic control:** maximum forward travel precision even at full speed
- 1st gear at 19 km/h
- Maximum speed 40 km/h

Agri Farmer | Agri Max | Agri Pivot

## VARIO SYSTEM

### 4 DRIVING MODES

**NORMAL**

**ECO**

**LOADER**

**CREEPER**

- **Integrated electronic control:** power, responsiveness and control in manoeuvres
- **Wide speed range:** from 0 to 40 km/h with no need to change gear
- **Cruise Control:** electronic accelerator and limiter

Agri Plus

Agri Max

## SHIFT ON FLY

### GEAR SHIFT IN MOTION

**MORE UPHILL SAFETY**

**MORE COMFORT ON THE ROAD**

- Hydrostatic transmission with **2-speed** mechanical gearbox
- Shift on Fly gearbox: possibility to **change gear while moving**
- Shift controls on the joystick: **less time spent on manoeuvres**

Agri Pivot

## HVT-1

### CONTINUOUSLY VARIABLE HYDROSTATIC-MECHANICAL CVT

- **The world's first telehandler** with epicyclic gear train transmission
- Speed 50 km/h **without torque interruption**
- **Maximum torque delivered to the wheels** in stall conditions and at low speed
- Reduced engine rpm = **low fuel consumption and low noise**
- **Smooth driving** with the vehicle always in gear even when towing

Agri Max Power X2



# MINI AGRI SMART

20.4

SMALL GIANT



HYDRO MONO

Agile in small spaces, precise in all movements. The high strength of the boom makes it possible to **handle loads at great heights** without any risk.

The **3 steering modes** - front, concentric, transverse - allow **smooth driving** even with the heaviest loads.

The dashboard layout has been completely revised to improve **accessibility** to the roomy cab.



TILTING BALLAST

NEW ENGINE HOOD

90° ROTATING RADIATOR

## NEW PATENTED INNOVATION

The Dieci Research & Development department has created a set of patented solutions that improve accessibility to components for **easy and immediate maintenance**.



## DIMENSIONS



# MINI AGRI

26.6

FLUID AND PRECISE



HYDRO MONO

Unrivaled fluidity of movement and millimetric precision in small movements.

Controlled vehicle travel, even at full boom speed, through electronic accelerator and inching pedal.

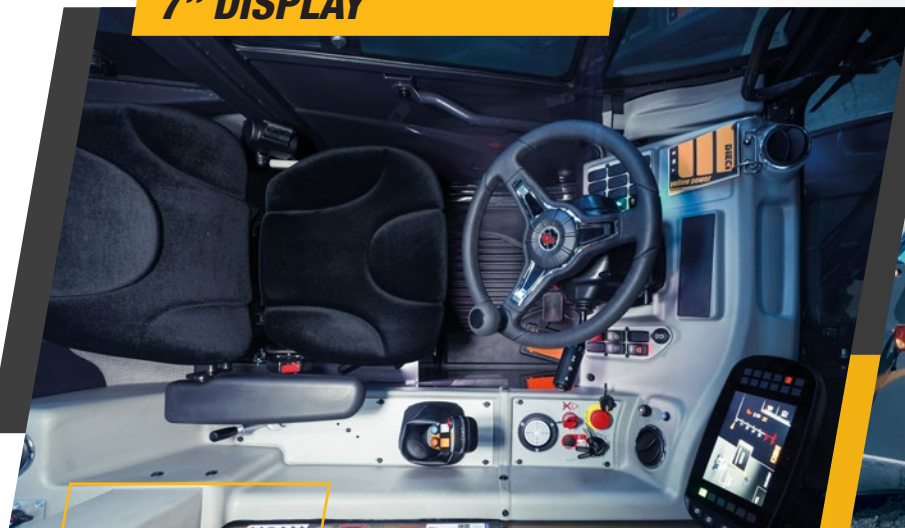
Pneumatic suspension on the boom reduces oscillations to a minimum.

The new hydraulic pump reduces working time by 15%.

## DIMENSIONS



## 7" DISPLAY



# AGRI FARMER

37.7 | 30.9 34.7 | 32.9

THE RIGHT SIZE



HYDRO DUAL



HYDROSTATIC TRANSMISSION  
WITH ELECTRONIC CONTROL

## NEW SIZES, MORE SIZES

The Agri Farmer family now offers new sizes. According to the requirement, the most **appropriate size** of vehicle can be selected for the specific job.

The different models are available in **different widths and heights**, while maintaining the same agility and efficiency.



30.7 34.7  
30.9 32.9



# AGRI STAR

37.7 | 40.8 | 38.10

AGILE AND FAST



HYDRO MONO



A high-performance vehicle for a streamlined and efficient production cycle.

The **single-speed hydrostatic transmission** eliminates gear changes and jerks and produces high towing force even at high speeds.

The **creeper function** on the accelerator allows the operator to adjust the speed without using the inching control and to maintain constant engine speed and oil flow, for efficient use of equipment such as sweepers or straw spreaders.





# AGRI PLUS

42.7 | 40.10

PURE TECHNOLOGY



## VARIO SYSTEM TRANSMISSION



4 modes: Normal, ECO, Loader, Creeper

Cruise Control

From 0 to 40 km/h with no need to change gear

Integrated electronic control



## NEW HIGH TECH BOOM

Advanced functions: Shake, Wall, Memory.

Dual pump with Energy Saving system, for reactive and precise boom even at high power.



# AGRI MAX

50.8 | 65.8 | 60.9 | 75.10

LARGE AND PERFORMING



## VARIO SYSTEM TRANSMISSION



4 modes: Normal, ECO, Loader, Creeper

Cruise Control

From 0 to 40 km/h with no need to change gear

Integrated electronic control



## NEW HIGH TECH BOOM

The single extension arm makes it possible to reach **10 meters** with maximum stability and accuracy of movement.

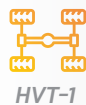
Advanced functions: Shake, Wall, Memory.



# AGRI MAX POWER X2

50.8 | 65.8 | 60.9

DUAL POWER, MAXIMUM EFFICIENCY



HVT-1



## THE FIRST IN THE WORLD

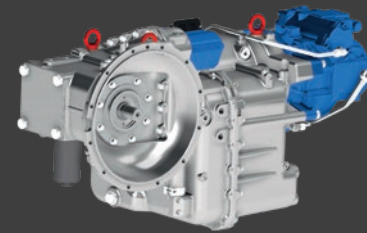
Two power outputs combined by a **mechanical** and a **hydrostatic** branch connected by a **planetary gear**.

**Continuous variation** over 50 km/h without torque interruption, greater **precision and control** of manoeuvres and speeds.

Choice of softer or more aggressive settings for all **operating requirements**.



## HVT-1 TRANSMISSION



Power Split technology

Tows up to **30 tonnes**

Up to **50 km/h**



The highest performing vehicle in the Dieci agricultural range features the mechatronic advantages of the **HVT1 transmission**.

For the first time in the world, a telehandler is fitted with this unique innovative transmission.



**CONTINUOUSLY VARIABLE HYDROSTATIC-MECHANICAL CVT TRANSMISSION**

# AGRI PIVOT

T60 | T70 | T80

TOTAL INNOVATION



SHIFT ON FLY  
HYDRO DUAL

**NEW**

## HIGH TECH BOOM

Advanced functions: **Shake, Wall, Memory, Floating.**

Stronger boom, greater reach, highly tipable bucket.

**Flow Sharing:** all vehicle movements at the same time.



**NEW**

## SHIFT ON FLY

Gear changes **without stopping.**

Automatic uphill braking.



**NEW**

## NEW COMFORT

Renewed cab: **more legroom**, completely redesigned dashboard, new monitor.

Main controls collected on the **new armrest**, integrated into the seat.

Improved air conditioning and soundproofing, **redesigned engine hood** for greater accessibility.



# DIECI

## FULL ELECTRIC

Dieci's innovation continues to grow, bringing to the market the new **100% electric telehandlers**.

**Maneuverability, versatility, and cost-effectiveness** meet the advantages of electric power, allowing efficient operation in any working condition.

**Compact, agile, and high-performing telehandlers**, ideal for indoor use, urban areas, greenhouses, or **environmentally restricted zones**.

## ELECTRIC TECHNOLOGY

Thanks to advanced technological solutions, the **electric telehandler** offers significant operational benefits:

Reduced noise levels

Easy and quick battery change

Low maintenance

No usage limitations

## RECHARGING SYSTEM

**3 charging sockets** as standard, all connected to the onboard battery charger system.



**EXTERNAL FAST CHARGERS**



## MINI AGRI

### BATTERY



Dual lithium battery (LiFePo4)\*

\* ECE R100 approved

Modular technology: **optimized costs and efficiency** thanks to an **expandable battery pack**.



## MINI AGRI SMART

### BATTERY



Lithium battery (LiFePo4)\*

\* ECE R100 approved

**Compact size and functional design**: spacious cab, controls, and information always accessible to the operator.



# TECHNICAL DATA

## DIECI AGRI RANGE

SCAN THE QR CODE FOR COMPLETE AND UPDATED DATA

### MINI AGRI SMART



### MINI AGRI



### AGRI FARMER



### AGRI STAR



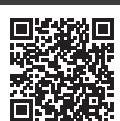
### AGRI PLUS



### AGRI MAX



### AGRI MAX POWER X2



### AGRI PIVOT



### MINI AGRI-e



### MINI AGRI-e SMART



Data refers to the CE market only.  
For all other markets, scan the QR code.



DOCC0000106-EN-04

The vehicles shown in this catalog can be equipped with standard attachments or equipment, on request or not available, according to the versions. Dieci Srl reserves the right to modify the specifications described and illustrated at any time and without prior notice. Non-contractual document. Non-exhaustive specification list. The photos and diagrams contained in this brochure are provided for consultation and for information purposes.

# **DIECI**

FULL RANGE 2025 CATALOG

# **AGRICULTURE**



[www.dieci.com](http://www.dieci.com)