



## PEGASUS ESSENTIAL

40.18



[dieci-americas.com](http://dieci-americas.com)

PERFORMANCE

Vehicle model	Pegasus 40.18
Maximum capacity	8800 lb (3992 kg)
Maximum lifting height	59.1 ft (18 m)
Maximum horizontal extension	50.2 ft (15.3 m)
Fork swiveling angle	133°
Pull-out force	12814 lbf (5700 daN)
Towing force	14613 lbf (6500 daN)
Unladen weight	32408 lb (14700 kg)
Maximum climb angle	37 %
Max speed (referred to wheels with maximum permitted diameter)	18.6 mph (30 km/h)

BOOM

Vehicle model	Pegasus 40.18
Getting off the basket	14.2 s
Lifting	20.6 s
Extension	26 s
Retraction	17 s
Forward swiveling	3.8 s
Reverse swiveling	2 s

ENGINE

Vehicle model	Pegasus 40.18
Brand	Perkins
Nominal power	115 HP (85.9 kW)
@rpm	2200 rpm
Peak power	115 HP (85.9 kW)
@rpm	2200 rpm
Operation	4-stroke
Injection	Electronic, Common Rail
Number and arrangement of cylinders	4, Vertical in line
Displacement	221 in³ (3621 cm³)
Consumption	355.32 lb/Hp h (216 g/kWh)
@rpm	1900 rpm
Emission standards	Stage V/Tier 4f
Exhaust gas treatment	DOC+DPF+SCR (with AdBlue)
Cooling system	Liquid
Intake	16-valve turbocharger with aftercooler
Air filter	Air pre-heating and air pre-filtering with dust separator

TRANSMISSION

Vehicle model	Pegasus 40.18
Transmission type	Hydrostatic with variable displacement pump
Hydraulic motor	Hydrostatic with continuous automatic adjustment
Reversal	Electro-Hydraulic operated with vehicle in motion
Inching	With pedal for controlled forward movement
Gearbox	Servo-controlled 2-speed

DIFFERENTIAL AXLES

Vehicle model	Pegasus 40.18
Type of axles	2 steering, with 4 epicycloidal reduction gears
Type of steering	4 wheels / transversal / 2 wheels
Front axle	Rigid
Rear axle	Swinging
Service braking	Oil bath with servo brake on front and rear axle with double hydraulic system
Parking braking	Negative actuation with electrical control

HYDRAULIC SYSTEM

Vehicle model	Pegasus 40.18
Hydraulic pump type	Gear pump for power steering and movements
Hydraulic pump capacity	31.7 gal/min (120 l/min)
Max. operating pressure	3481 psi (24 MPa)
Distributor control	Proportional 5in1 Joystick
Distributor type	Hydraulic in 5 sections with "Load Sensing" proportional electronic servo-control with "Flow Sharing", 5 simultaneous movements with independent maximum speed control of each movement.
Outriggers	4 independent outriggers with hydraulic lowering

FILLING

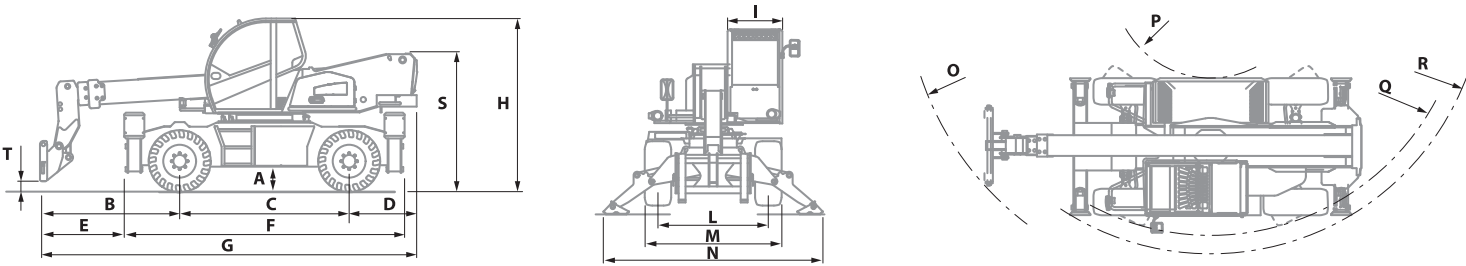
Vehicle model	Pegasus 40.18
Hydraulic system (total)	71.33 gal (270 l)
Diesel tank	47.55 gal (180 l)
AdBlue tank	5.02 gal (19 l)

TYRES

Vehicle model	Pegasus 40.18
Standard tires	400/70x20" (405/70-20"; 16/70-20")

DIMENSIONS

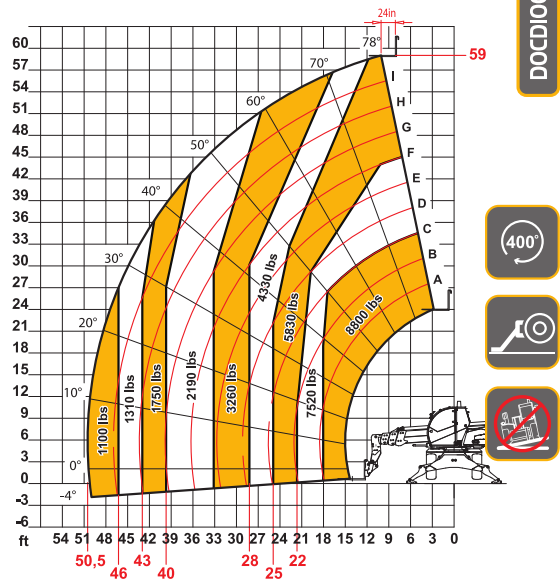
Vehicle model	Pegasus 40.18
A	12.2 in (310 mm)
B	89.8 in (2280 mm)
C	116.1 in (2950 mm)
D	46.3 in (1175 mm)
E	52.4 in (1330 mm)
F	192.1 in (4880 mm)
G	261.0 in (6630 mm)
H	119.3 in (3030 mm)
I	38.6 in (980 mm)
L	75.6 in (1920 mm)
M	93.7 in (2380 mm)
N	157.5 in (4000 mm)
O	203.3 in (5163 mm)
P	66.9 in (1700 mm)
Q	174.4 in (4430 mm)
R	187.0 in (4750 mm)
S	95.3 in (2420 mm)
T	5.5 in (140 mm)



MAX 8800 lb



DOCCT00001366



40.18