

# ***DIECI***



## ***AGRI STAR***

***37.7 | 37.8 | 38.10***



***dieci.com***

PERFORMANCE

Vehicle model	AGRI STAR 37.7	AGRI STAR 37.8	AGRI STAR 38.10
Maximum capacity	3700 kg (8157 lb)	3700 kg (8157 lb)	3800 kg (8378 lb)
Maximum lifting height	7.35 m (24.1 ft)	7.8 m (25.6 ft)	9.75 m (32.0 ft)
Maximum horizontal extension	4 m (13.1 ft)	4.45 m (14.6 ft)	6.45 m (21.2 ft)
Fork swiveling angle	146°	146°	146°
Pull-out force	5700 daN (12814 lbf)	5700 daN (12814 lbf)	5700 daN (12814 lbf)
Towing force	7300 daN (16411 lbf)	7300 daN (16411 lbf)	7300 daN (16411 lbf)
Unladen weight	7500 kg (16535 lb)	7600 kg (16755 lb)	7900 kg (17417 lb)
Maximum climb angle	40 %	40 %	40 %
Max speed (referred to wheels with maximum permitted diameter)	30 km/h (18.6 mph)	30 km/h (18.6 mph)	30 km/h (18.6 mph)

BOOM

Vehicle model	AGRI STAR 37.7	AGRI STAR 37.8	AGRI STAR 38.10
Getting off the basket	3.8 s	3.7 s	5 s
Lifting	7.3 s	7.2 s	8.7 s
Extension	5.2 s	5.5 s	7.6 s
Retraction	2.9 s	3.1 s	4.6 s
Forward swiveling	2.7 s	2.7 s	2.7 s
Reverse swiveling	1.7 s	1.6 s	1.6 s

ENGINE

Vehicle model	AGRI STAR 37.7	AGRI STAR 37.8	AGRI STAR 38.10
Brand	FPT	FPT	FPT
Nominal power	93 kW (125 HP)	93 kW (125 HP)	93 kW (125 HP)
@rpm	2200 rpm	2200 rpm	2200 rpm
Peak power	93 kW (125 HP)	93 kW (125 HP)	93 kW (125 HP)
@rpm	2200 rpm	2200 rpm	2200 rpm
Operation	4-stroke	4-stroke	4-stroke
Injection	Mechanical direct	Mechanical direct	Mechanical direct
Number and arrangement of cylinders	4, Vertical in line	4, Vertical in line	4, Vertical in line
Displacement	4485 cm³ (274 in³)	4485 cm³ (274 in³)	4485 cm³ (274 in³)
Consumption	230 g/kWh (378.35 lb/Hp h)	230 g/kWh (378.35 lb/Hp h)	230 g/kWh (378.35 lb/Hp h)
@rpm	2200 rpm	2200 rpm	2200 rpm
Emission standards	Stage IIIA/Tier 3	Stage IIIA/Tier 3	Stage IIIA/Tier 3
Cooling system	Liquid	Liquid	Liquid
Intake	Turbocharger after-cooler	Turbocharger after-cooler	Turbocharger after-cooler
Air filter	Replaceable cartridge for dry filter	Replaceable cartridge for dry filter	Replaceable cartridge for dry filter

TRANSMISSION

Vehicle model	AGRI STAR 37.7	AGRI STAR 37.8	AGRI STAR 38.10
Transmission type	Hydrostatic with variable displacement pump	Hydrostatic with variable displacement pump	Hydrostatic with variable displacement pump
Hydraulic motor	Hydrostatic with continuous automatic adjustment	Hydrostatic with continuous automatic adjustment	Hydrostatic with continuous automatic adjustment
Reversal	Electro-Hydraulic	Electro-Hydraulic	Electro-Hydraulic
Inching	With hydraulic pedal for controlled forward movement	With hydraulic pedal for controlled forward movement	With hydraulic pedal for controlled forward movement
Gearbox	Servo-controlled 2-speed	Servo-controlled 2-speed	Servo-controlled 2-speed

DIFFERENTIAL AXLES

Vehicle model	AGRI STAR 37.7	AGRI STAR 37.8	AGRI STAR 38.10
Type of axles	2 steering, with 4 epicycloidal reduction gears	2 steering, with 4 epicycloidal reduction gears	2 steering, with 4 epicycloidal reduction gears
Type of steering	4 wheels / transversal / 2 wheels	4 wheels / transversal / 2 wheels	4 wheels / transversal / 2 wheels
Front axle	Rigid	Rigid	Rigid
Rear axle	Swinging	Swinging	Swinging
Service braking	Oil bath with servo brake on front axle	Oil bath with servo brake on front axle	Oil bath with servo brake on front axle
Parking braking	Negative actuation with electrical control	Negative actuation with electrical control	Negative actuation with electrical control

HYDRAULIC SYSTEM

Vehicle model	AGRI STAR 37.7	AGRI STAR 37.8	AGRI STAR 38.10
Hydraulic pump type	Gear pump for power steering and movements	Gear pump for power steering and movements	Gear pump for power steering and movements
Hydraulic pump capacity	130 l/min (34.3 gal/min)	130 l/min (34.3 gal/min)	130 l/min (34.3 gal/min)
Max. operating pressure	24 MPa (3481 psi)	24 MPa (3481 psi)	24 MPa (3481 psi)
Distributor control	Joystick with deadman capacitive sensor	Joystick with deadman capacitive sensor	Joystick with deadman capacitive sensor
Distributor type	Hydraulic control distributor-single joystick with proportional controls. Open center services	Hydraulic control distributor-single joystick with proportional controls. Open center services	Hydraulic control distributor-single joystick with proportional controls. Open center services

FILLING

Vehicle model	AGRI STAR 37.7	AGRI STAR 37.8	AGRI STAR 38.10
Hydraulic system (total)	140 l (36.98 gal)	140 l (36.98 gal)	140 l (36.98 gal)
Diesel tank	160 l (42.27 gal)	160 l (42.27 gal)	160 l (42.27 gal)

TOWING CAPACITY

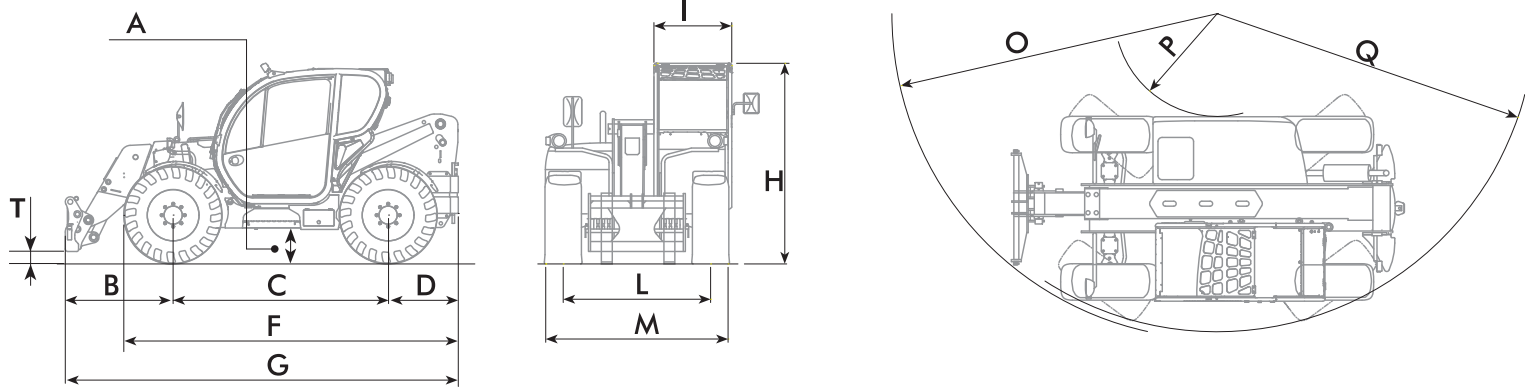
Vehicle model	AGRI STAR 37.7	AGRI STAR 37.8	AGRI STAR 38.10
Unbraked trailer	6000 kg (13228 lb)	6000 kg (13228 lb)	6000 kg (13228 lb)
Inertia braking	9000 kg (19842 lb)	9000 kg (19842 lb)	9000 kg (19842 lb)
Hydraulic/pneumatic braking	20000 kg (44092 lb)	20000 kg (44092 lb)	20000 kg (44092 lb)

TYRES

Vehicle model	AGRI STAR 37.7	AGRI STAR 37.8	AGRI STAR 38.10
Standard tires	400/70x20"	400/70x20"	400/70x20"

DIMENSIONS

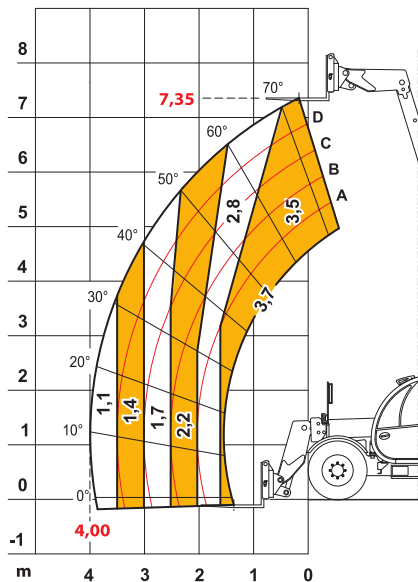
Vehicle model	AGRI STAR 37.7	AGRI STAR 37.8	AGRI STAR 38.10
A	340 mm (13.4 in)	340 mm (13.4 in)	340 mm (13.4 in)
B	1380 mm (54.3 in)	1620 mm (63.8 in)	1380 mm (54.3 in)
C	2600 mm (102.4 in)	2600 mm (102.4 in)	2600 mm (102.4 in)
D	970 mm (38.2 in)	970 mm (38.2 in)	970 mm (38.2 in)
F	4060 mm (159.8 in)	4060 mm (159.8 in)	4060 mm (159.8 in)
G	4950 mm (194.9 in)	4950 mm (194.9 in)	4950 mm (194.9 in)
H	2310 mm (90.9 in)	2310 mm (90.9 in)	2310 mm (90.9 in)
I	940 mm (37.0 in)	940 mm (37.0 in)	940 mm (37.0 in)
L	1780 mm (70.1 in)	1780 mm (70.1 in)	1780 mm (70.1 in)
M	2290 mm (90.2 in)	2290 mm (90.2 in)	2290 mm (90.2 in)
O	3700 mm (145.7 in)	4050 mm (159.4 in)	3700 mm (145.7 in)
P	950 mm (37.4 in)	950 mm (37.4 in)	950 mm (37.4 in)
Q	4000 mm (157.5 in)	4000 mm (157.5 in)	4000 mm (157.5 in)
T	175 mm (6.9 in)	160 mm (6.3 in)	220 mm (8.7 in)



MAX 3,7 t

500 mm

AXB1323

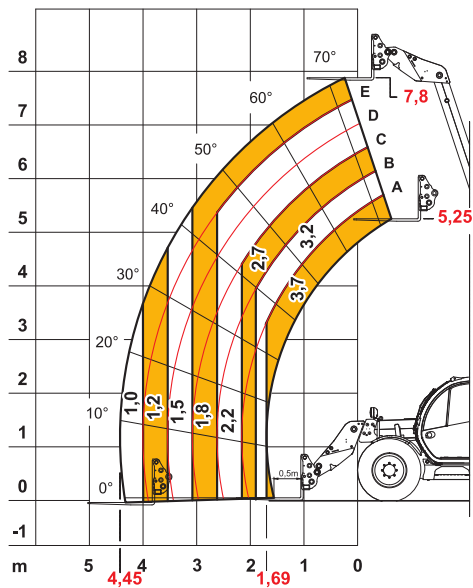


37.7

MAX 3,7 t

500 mm

DOC10000456



37.8

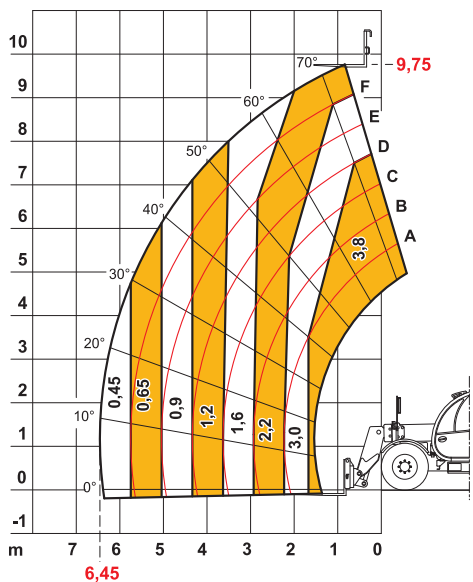
ON DEMAND

37.8

MAX 3,8 t

500 mm

AXB1381



38.10