

# ***DIECI***



## ***DEDALUS***

***28.7 | 30.7 | 28.9 | 30.9***



***dieci.com***

PERFORMANCE				
Vehicle model	DEDALUS 28.7	DEDALUS 30.7	DEDALUS 28.9	DEDALUS 30.9
Maximum capacity	2800 kg (6173 lb)	3000 kg (6614 lb)	2800 kg (6173 lb)	3000 kg (6614 lb)
Maximum lifting height	6.35 m (20.8 ft)	6.35 m (20.8 ft)	8.7 m (28.5 ft)	8.7 m (28.5 ft)
Maximum horizontal extension	3.65 m (12.0 ft)	3.65 m (12.0 ft)	5.7 m (18.7 ft)	5.7 m (18.7 ft)
Fork swiveling angle	146°	146°	146°	146°
Pull-out force	5700 daN (12814 lbf)	5700 daN (12814 lbf)	5700 daN (12814 lbf)	5700 daN (12814 lbf)
Towing force	5500 daN (12364 lbf)	5500 daN (12364 lbf)	5500 daN (12364 lbf)	5500 daN (12364 lbf)
Unladen weight	6100 kg (13448 lb)	6100 kg (13448 lb)	6250 kg (13779 lb)	6250 kg (13779 lb)
Maximum climb angle	40 %	40 %	40 %	40 %
Max speed (referred to wheels with maximum permitted diameter)	35 km/h (21.7 mph)	35 km/h (21.7 mph)	35 km/h (21.7 mph)	35 km/h (21.7 mph)

BOOM				
Vehicle model	DEDALUS 28.7	DEDALUS 30.7	DEDALUS 28.9	DEDALUS 30.9
Getting off the basket	3.9 s	3.9 s	4.7 s	4.7 s
Lifting	7.4 s	7.4 s	9 s	9 s
Extension	5.7 s	5.7 s	5.2 s	5.2 s
Retraction	3.2 s	3.2 s	2.9 s	2.9 s
Forward swiveling	3.2 s	3.2 s	3.2 s	3.2 s
Reverse swiveling	2.1 s	2.1 s	1.7 s	1.7 s

ENGINE				
Vehicle model	DEDALUS 28.7	DEDALUS 30.7	DEDALUS 28.9	DEDALUS 30.9
Brand	Kubota	Kubota	Kubota	Kubota
Nominal power	73.4 kW (98 HP)	73.4 kW (98 HP)	73.4 kW (98 HP)	73.4 kW (98 HP)
@rpm	2600 rpm	2600 rpm	2600 rpm	2600 rpm
Operation	4-stroke	4-stroke	4-stroke	4-stroke
Injection	Mechanical	Mechanical	Mechanical	Mechanical
Number and arrangement of cylinders	4, Vertical in line	4, Vertical in line	4, Vertical in line	4, Vertical in line
Displacement	3769 cm³ (230 in³)	3769 cm³ (230 in³)	3769 cm³ (230 in³)	3769 cm³ (230 in³)
Consumption	231 g/kWh (380.00 lb/Hp h)	231 g/kWh (380.00 lb/Hp h)	231 g/kWh (380.00 lb/Hp h)	231 g/kWh (380.00 lb/Hp h)
@rpm	2600 rpm	2600 rpm	2600 rpm	2600 rpm
Emission standards	Stage IIIA/Tier 3	Stage IIIA/Tier 3	Stage IIIA/Tier 3	Stage IIIA/Tier 3
Cooling system	Liquid	Liquid	Liquid	Liquid
Intake	Turbo compressor	Turbo compressor	Turbo compressor	Turbo compressor
Air filter	Self-cleaning air prefilter	Self-cleaning air prefilter	Self-cleaning air prefilter	Self-cleaning air prefilter

TRANSMISSION				
Vehicle model	DEDALUS 28.7	DEDALUS 30.7	DEDALUS 28.9	DEDALUS 30.9
Transmission type	Hydrostatic with variable displacement pump	Hydrostatic with variable displacement pump	Hydrostatic with variable displacement pump	Hydrostatic with variable displacement pump
Hydraulic motor	Hydrostatic with continuous automatic adjustment	Hydrostatic with continuous automatic adjustment	Hydrostatic with continuous automatic adjustment	Hydrostatic with continuous automatic adjustment
Reversal	Electro-Hydraulic	Electro-Hydraulic	Electro-Hydraulic	Electro-Hydraulic
Inching	With hydraulic pedal for controlled forward movement	With hydraulic pedal for controlled forward movement	With hydraulic pedal for controlled forward movement	With hydraulic pedal for controlled forward movement
Gearbox	Servo-controlled 2-speed	Servo-controlled 2-speed	Servo-controlled 2-speed	Servo-controlled 2-speed

DIFFERENTIAL AXLES				
Vehicle model	DEDALUS 28.7	DEDALUS 30.7	DEDALUS 28.9	DEDALUS 30.9
Type of axles	2 steering, with 4 epicycloidal reduction gears	2 steering, with 4 epicycloidal reduction gears	2 steering, with 4 epicycloidal reduction gears	2 steering, with 4 epicycloidal reduction gears
Type of steering	4 wheels / transversal / 2 wheels	4 wheels / transversal / 2 wheels	4 wheels / transversal / 2 wheels	4 wheels / transversal / 2 wheels
Front axle	Rigid	Rigid	Rigid	Rigid
Rear axle	Swinging	Swinging	Swinging	Swinging
Service braking	Oil bath with servo brake on front axle	Oil bath with servo brake on front axle	Oil bath with servo brake on front axle	Oil bath with servo brake on front axle
Parking braking	Negative actuation with electrical control	Negative actuation with electrical control	Negative actuation with electrical control	Negative actuation with electrical control

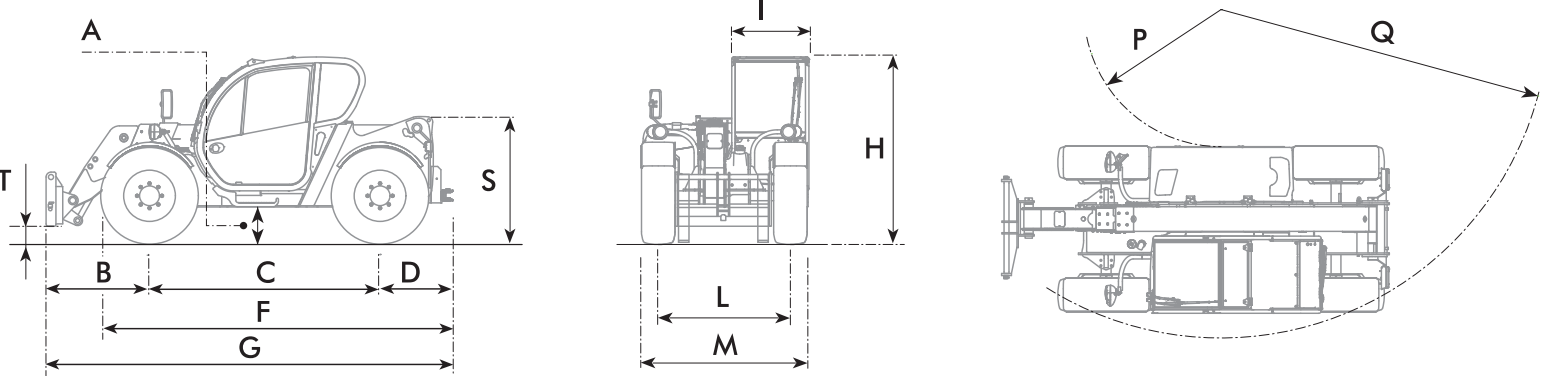
HYDRAULIC SYSTEM				
Vehicle model	DEDALUS 28.7	DEDALUS 30.7	DEDALUS 28.9	DEDALUS 30.9
Hydraulic pump type	Gear pump for power steering and movements	Gear pump for power steering and movements	Gear pump for power steering and movements	Gear pump for power steering and movements
Hydraulic pump capacity	115 l/min (30.4 gal/min)	115 l/min (30.4 gal/min)	115 l/min (30.4 gal/min)	115 l/min (30.4 gal/min)
Max. operating pressure	24.5 MPa (3553 psi)	24.5 MPa (3553 psi)	24.5 MPa (3553 psi)	24.5 MPa (3553 psi)
Distributor control	Joystick with deadman button	Joystick with deadman button	Joystick with deadman button	Joystick with deadman button
Distributor type	Proportional 4 in 1 joystick hydraulic distributor with electrohydraulic servocontrol. Open center services	Proportional 4 in 1 joystick hydraulic distributor with electro-hydraulic servocontrol. Open center services	Proportional 4 in 1 joystick hydraulic distributor with electro-hydraulic servocontrol. Open center services	Proportional 4 in 1 joystick hydraulic distributor with electro-hydraulic servocontrol. Open center services

FILLING				
Vehicle model	DEDALUS 28.7	DEDALUS 30.7	DEDALUS 28.9	DEDALUS 30.9
Hydraulic system (total)	140 l (36.98 gal)	140 l (36.98 gal)	140 l (36.98 gal)	140 l (36.98 gal)
Diesel tank	100 L (26.42 gal)	100 L (26.42 gal)	100 L (26.42 gal)	100 L (26.42 gal)

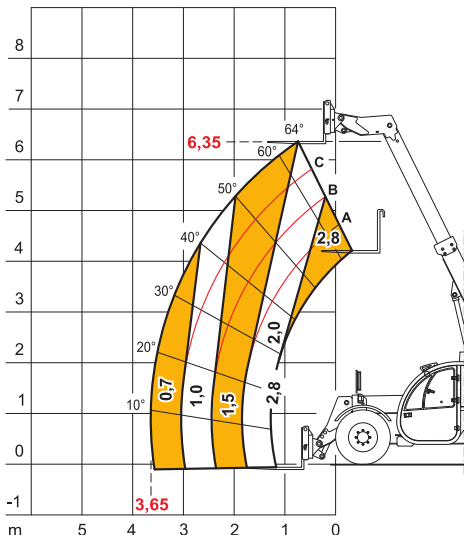
TYRES				
Vehicle model	DEDALUS 28.7	DEDALUS 30.7	DEDALUS 28.9	DEDALUS 30.9
Standard tires	12.5x18"	400/70x20"	12.5x18"	400/70x20"

DIMENSIONS

Vehicle model	DEDALUS 28.7	DEDALUS 30.7	DEDALUS 28.9	DEDALUS 30.9
A	400 mm (15.7 in)	400 mm (15.7 in)	400 mm (15.7 in)	400 mm (15.7 in)
B	1315 mm (51.8 in)	1315 mm (51.8 in)	1232 mm (48.5 in)	1232 mm (48.5 in)
C	2800 mm (110.2 in)	2800 mm (110.2 in)	2800 mm (110.2 in)	2800 mm (110.2 in)
D	650 mm (25.6 in)	650 mm (25.6 in)	743 mm (29.3 in)	743 mm (29.3 in)
F	3990 mm (157.1 in)	3990 mm (157.1 in)	4087 mm (160.9 in)	4087 mm (160.9 in)
G	4765 mm (187.6 in)	4765 mm (187.6 in)	4775 mm (188.0 in)	4775 mm (188.0 in)
H	2040 mm (80.3 in)	2220 mm (87.4 in)	2040 mm (80.3 in)	2220 mm (87.4 in)
I	940 mm (37.0 in)	940 mm (37.0 in)	940 mm (37.0 in)	940 mm (37.0 in)
L	1600 mm (63.0 in)	1600 mm (63.0 in)	1600 mm (63.0 in)	1600 mm (63.0 in)
M	2000 mm (78.7 in)	2000 mm (78.7 in)	2000 mm (78.7 in)	2000 mm (78.7 in)
P	1670 mm (65.7 in)	1670 mm (65.7 in)	1670 mm (65.7 in)	1670 mm (65.7 in)
Q	4000 mm (157.5 in)	4000 mm (157.5 in)	4000 mm (157.5 in)	4000 mm (157.5 in)



MAX 2,8 t



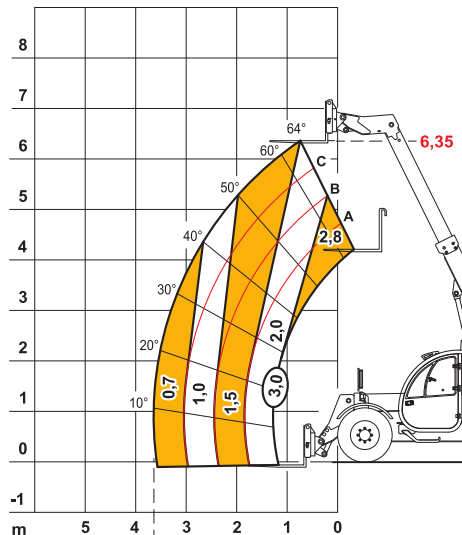
AXBI340



28.7

EN1459

MAX 3,0 t



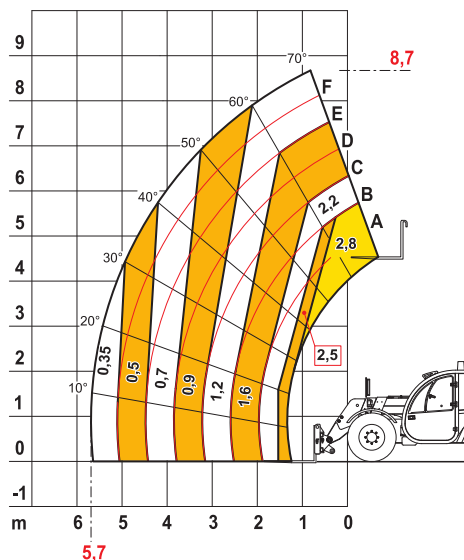
AXBI34I



30.7

EN1459

MAX 2,8 t



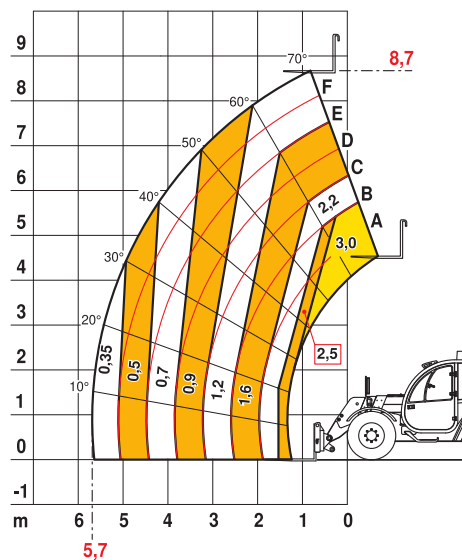
AXBI399



28.9

EN1459

MAX 3,0 t



AXBI400



30.9

EN1459