

# ***DIECI***



***APOLLO***

***26.6***



***dieci.com***

PERFORMANCE

Vehicle model	Apollo 26.6
Maximum capacity	2600 kg (5732 lb)
Maximum lifting height	5.73 m (18.8 ft)
Maximum horizontal extension	3.2 m (10.5 ft)
Fork swiveling angle	129°
Pull-out force	5510 daN (12387 lbf)
Towing force	4400 daN (9892 lbf)
Unladen weight	5100 kg (11244 lb)
Maximum climb angle	40 %
Max speed (referred to wheels with maximum permitted diameter)	30 km/h (18.6 mph)

BOOM

Vehicle model	Apollo 26.6
Getting off the basket	5.24 s
Lifting	10.07 s
Extension	7.87 s
Retraction	4.37 s
Forward swiveling	4.54 s
Reverse swiveling	2.87 s

ENGINE

Vehicle model	Apollo 26.6
Brand	YANMAR
Nominal power	53.7 kW (72 HP)
@rpm	2500 rpm
Operation	4-stroke
Injection	Electronic, Common Rail
Number and arrangement of cylinders	4, Vertical in line
Displacement	3319 cm <sup>3</sup> (203 in³)
Consumption	235 g/kWh (386.58 lb/Hp h)
@rpm	2500 rpm
Emission standards	Stage V/Tier 4f
Exhaust gas treatment	Catalyst + Particulate filter (DOC+DPF)
Cooling system	Liquid
Intake	Turbo compressor
Air filter	Air pre-heating and air pre-filtering with dust separator

TRANSMISSION

Vehicle model	Apollo 26.6
Transmission type	Single speed Hydrostatic transmission with variable displacement pump
Hydraulic motor	Hydrostatic with continuous automatic adjustment
Reversal	Electro-Hydraulic
Inching	With hydraulic pedal for controlled forward movement

DIFFERENTIAL AXLES

Vehicle model	Apollo 26.6
Type of axles	2 steering, with 4 epicycloidal reduction gears
Type of steering	4 wheels / transversal / 2 wheels
Front axle	Rigid
Rear axle	Swinging
Service braking	Oil bath on front axle
Parking braking	Negative actuation with electrical control

HYDRAULIC SYSTEM

Vehicle model	Apollo 26.6
Hydraulic pump type	Gear pump for power steering and movements
Hydraulic pump capacity	80 l/min (21.1 gal/min)
Max. operating pressure	23 MPa (3336 psi)
Distributor control	Proportional 4in1 Joystick
Distributor type	Single-lever hydraulic proportional

FILLING

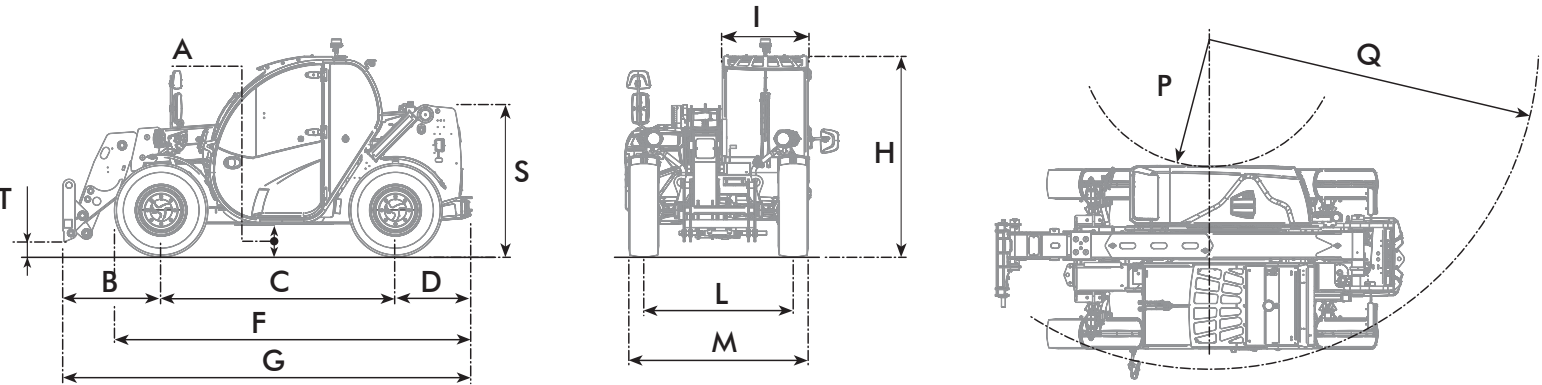
Vehicle model	Apollo 26.6
Hydraulic system (total)	85 l (22.45 gal)
Diesel tank	80 l (21.13 gal)

TYRES

Vehicle model	Apollo 26.6
Standard tires	12-16.5

DIMENSIONS

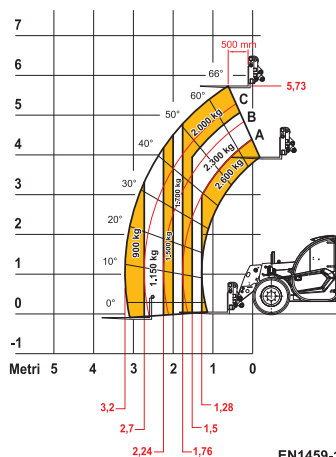
Vehicle model	Apollo 26.6
A	250 mm (9.8 in)
B	985 mm (38.8 in)
C	2350 mm (92.5 in)
D	765 mm (30.1 in)
F	3585 mm (141.1 in)
G	4100 mm (161.4 in)
H	1955 mm (77.0 in)
I	860 mm (33.9 in)
L	1510 mm (59,4 in)
M	1860 mm (73.2 in)
P	1300 mm (51,2 in)
Q	3380 mm (133,1 in)
S	1460 mm (57.5 in)
T	100 mm (3.9 in)



MAX  
2600 kg



DOC10000822



EN1459-1 ANNEX B

26.6