



# AGRI MAX POWER X2

50.8 | 65.8 | 60.9

**DIECI**





## CONTINUOUS EVOLUTION

Constantly ahead in terms of technological solutions, Dieci continues the evolutionary process of its vehicles, raising the standards with the **New Agriculture Range**.

**Reliability, efficiency and comfort** have reached unprecedented levels through improved design and instrumentation and the introduction of **innovation and technology**.

New **Stage V** engines on the whole range, **360° suspended cab** and **new interior, more intuitive and functional diagnostics and controls, new chassis** and **new transmissions**, bring tomorrow's agricultural telehandlers into the field today.

Agri Max, the highest performing vehicle in the Dieci agricultural range features the mechatronic advantages of the HVT-1 transmission: a Power Split hydro-mechanical transmission with continuous automatic speed variation. This is how the **AGRI MAX POWER X2** was created.



## AGRI MAX POWER X2

50.8 | 65.8 | 60.9

# FIRST IN THE WORLD

With the Agri Max Power X2, Dieci applies the **HVT-1 transmission** to a telehandler for the first time in the world.

With its **Power Split** technology, Dieci fulfills farmers' desire for versatility and offers a vehicle that performs as well as a tractor in both speed and towing, overcoming the typical limits of overheating.



- TOWING UP TO 30T
- HVT-1 TRANSMISSION
- UP TO 50 KM/H

### 50.8 AGRI MAX POWER X2

- ↑ Maximum lifting: 7.7 m
- 📦 Capacity: 4.9 t

### 65.8 AGRI MAX POWER X2

- ↑ Maximum lifting: 7.7 m
- 📦 Capacity: 6.5 t

### 60.9 AGRI MAX POWER X2

- ↑ Maximum lifting: 8.6 m
- 📦 Capacity: 6.0 t





# HVT-1

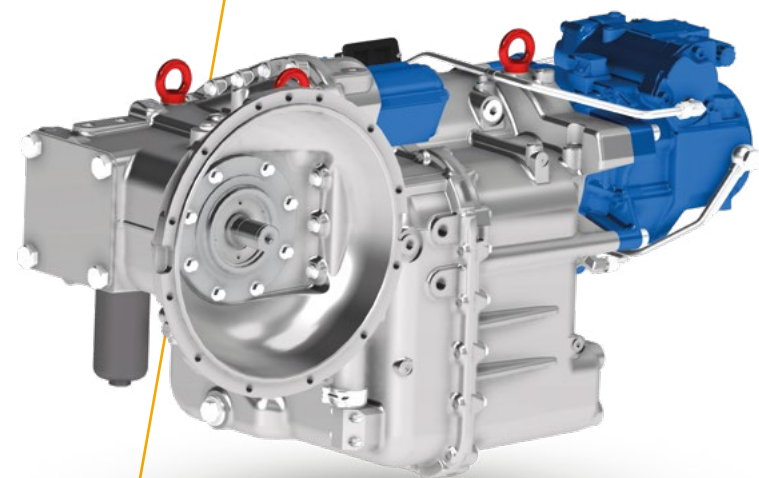
## CONTINUOUSLY VARIABLE HYDROSTATIC-MECHANICAL CVT TRANSMISSION

For the first time in the world, Dieci applies the **HVT-1 transmission** with **Power Split** technology to a telehandler. With continuous automatic speed and torque variation, the mechanical and hydraulic components modulate their output according to the effort the machine has to overcome.

The Power Split transmission combines the high efficiency of the **mechanical transmission** with the wide speed variation range of the **hydrostatic transmission**, allowing the vehicle to work between 0 and 50km/h **without torque interruption**.

A **thermostatic valve** combined with the electronic control of the fan drive keeps the **oil temperature constant**, ensuring **smooth motion** and torque output always easily controlled.

- **MAXIMUM TORQUE TO THE WHEELS IN STANDSTILL CONDITIONS AND AT LOW SPEED**
- **LOW ENGINE RPM = LOW FUEL CONSUMPTION AND NOISE**
- **SMOOTH DRIVING AND CONSTANT PULL EVEN WHEN TOWING**





# ADVANCED CONTROL

## AXLE ABSORBING SYSTEM

Electronically controlled shock-absorbing system installed on the front axle for **greater control and maximum comfort when driving**, especially at high speed.

## NEW BRAKING SYSTEM

Upgraded brakes on both axles: 4 packs of oil-bath carbon discs. **Engine Brake** to improve braking and not overload the braking system.







### **TRANSVERSE LEVELING SYSTEM**

Transverse leveling, **integrated into the front suspension management system** to work safely even on the roughest terrain.

### **EASY RIDE SYSTEM**

**Boom suspension system** that can drastically reduce the oscillations encountered when driving over rough terrain or at high speed.



# HI-TECH EFFICIENCY

## ACTIVE POWER

The new **Power Management software**, developed by Dieci for Agri Max Power X2, processes the total power produced by the engine and, depending on the driving mode selected, distributes it in percentages for boom and transmission management. The entire system is managed completely electronically, optimizing engine, transmission and boom control.

## LOAD SENSING PUMP WITH ELECTRONIC CONTROL

The Load Sensing piston pump, which electronically controls the boom, delivers **up to 35% more capacity** than vehicles in the same range, ensuring **maximum smoothness and precision of movement**. The **Flow Sharing distributor** allows multiple boom movements at the same time, at maximum speed and with maximum comfort through electronic control.







## INTELLIGENT COOLING

**Double radiator with dual reversible fans:** electronic management adjusts the rotation speed intelligently depending on the temperature of all fluids to **optimize operating temperatures** according to consumption and performance.

## OPTIMIZED DRIVING

**Four driving modes** are available, for a **softer or more aggressive setting:** Normal, Loader, Eco, Creeper

## HIGH TECH BOOM

Advanced boom functions

- **Shake:** repeated tilting movements at the end of the stroke to facilitate detachment of residual material from the bottom of the bucket.
- **Wall:** load lifting along a vertical line with a single joystick movement to facilitate stacking.
- **Memory:** stored boom position, to reach it again with a single click.



# SUSPENDED CAB



EXCLUSIVE DIECI

## ZERO SHOCK SYSTEM

**Cab shock-absorbing system**, unique in the telehandler sector, capable of effectively dampening the most annoying oscillations on the roughest terrain.

The hydraulic suspension of the cab effectively reduces oscillations and offers a high driving comfort through **4 supports that absorb impacts and jolts in every direction**: lateral, vertical, rear and front.



Front Silent Block with variable absorption



Rear hydraulic shock absorbers







■ 7" DISPLAY



# TOTAL COMFORT

## MORE VALUE

- Cab by Giugiaro Design
- Refined soft-touch interiors, derived from the automotive industry

## MORE LEGROOM

- Best-in-class ergonomics and accessibility
- More space for the operator's legs

## MORE COMFORT

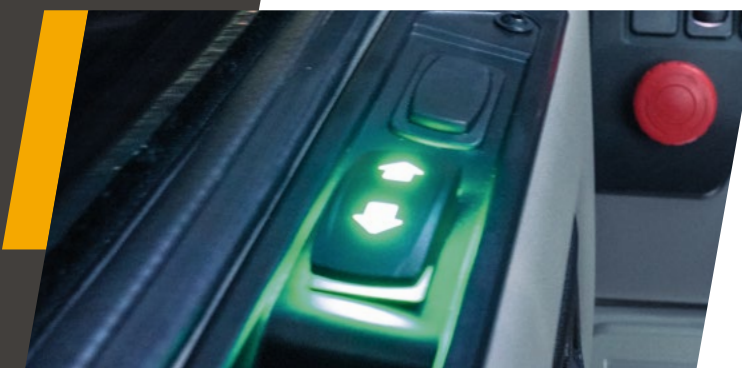
- Adjustable steering column and armrest
- Heated seat, 3 suspension system options
- Soundproofing roof, dashboard and mat
- Quick demisting of the windows

## MORE VISIBILITY

- Large windows
- Integrated LED worklights on the cab - Headlights on the perimeter, on the boom and on the boom head
- Up to 3 wireless cameras

## BETTER CLIMATE CONTROL

- Optimized internal ventilation: 6 adjustable vents
- Rear glass and openable roof
- Electric lateral window
- Quick demisting of the windows
- Air conditioning system with double air filter
- Operator protected against dust and odors





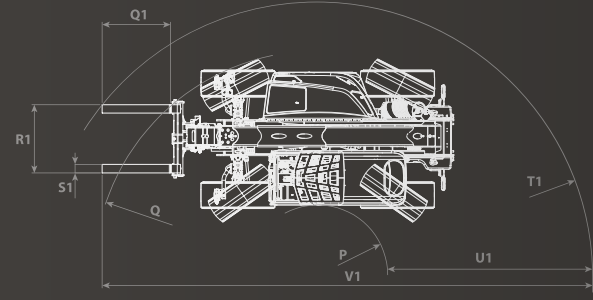
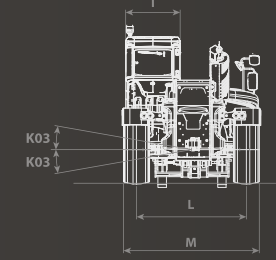
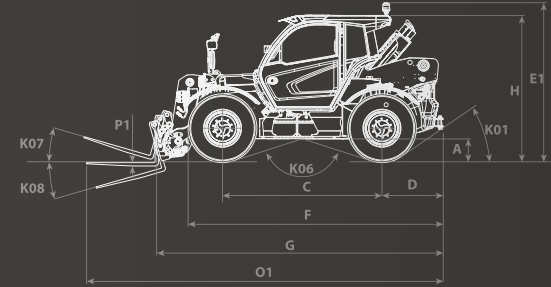
# TECHNICAL DATA

## PERFORMANCE

Vehicle model	AGRI MAX 50.8 POWER X2	AGRI MAX 65.8 POWER X2	AGRI MAX 60.9 POWER X2
Maximum capacity	4999 kg (11021 lb)	6500 kg (14330 lb)	6000 kg (13228 lb)
Maximum lifting height	7,7 m (25,3 ft)	7,7 m (25,3 ft)	8,6 m (28,2 ft)
Maximum horizontal extension	4,1 m (13,5 ft)	4,1 m (13,5 ft)	4,1 m (13,5 ft)
Fork swiveling angle	144 °	144 °	144 °
Pull-out force	8900 daN (20008 lbf)	8900 daN (20008 lbf)	8900 daN (20008 lbf)
Towing force	8585 daN (19300 lbf)	8585 daN (19300 lbf)	8585 daN (19300 lbf)
Maximum climb angle	40 %	40 %	40 %
Unladen weight	10870 kg (23964 lb)	11850 kg (26125 lb)	11850 kg (26125 lb)
Max speed (referred to wheels with maximum permitted diameter)	50 km/h (31,1 mph)	50 km/h (31,1 mph)	50 km/h (31,1 mph)

## ENGINE

Vehicle model	AGRI MAX 50.8 POWER X2	AGRI MAX 65.8 POWER X2	AGRI MAX 60.9 POWER X2
Brand	FPT	FPT	FPT
Nominal power	125 kW (168 HP)	125 kW (168 HP)	125 kW (168 HP)
@rpm	2200 rpm	2200 rpm	2200 rpm
Peak power	128 kW (172 HP)	128 kW (172 HP)	128 kW (172 HP)
@rpm	1900 rpm	1900 rpm	1900 rpm
Displacement	4485 cm³ (274 in³)	4485 cm³ (274 in³)	4485 cm³ (274 in³)
Emission standard	Stage V	Stage V	Stage V
Exhaust gas treatment	DOC+SCRoF (con AdBlue)	DOC+SCRoF (con AdBlue)	DOC+SCRoF (con AdBlue)

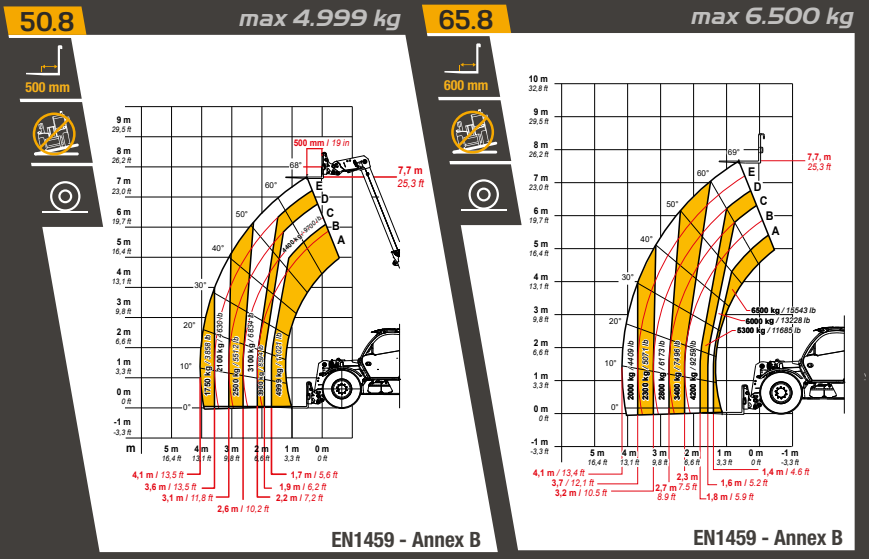


## HYDRAULIC SYSTEM

Vehicle model	AGRI MAX 50.8 POWER X2	AGRI MAX 65.8 POWER X2	AGRI MAX 60.9 POWER X2
Hydraulic pump capacity	305 l/min (80,6 gal/min)	305 l/min (80,6 gal/min)	305 l/min (80,6 gal/min)
Max. operating pressure	26 MPa (3771 psi)	26 MPa (3771 psi)	26 MPa (3771 psi)

## DIMENSIONS

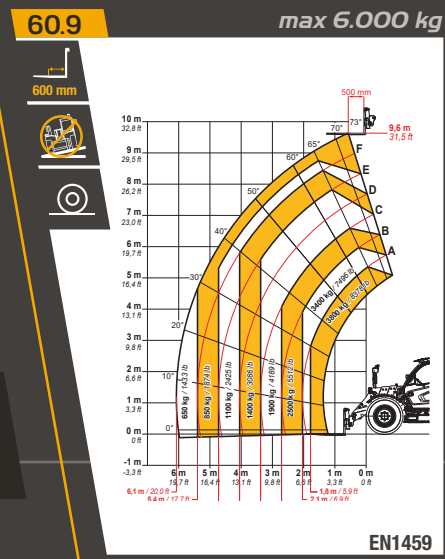
Vehicle model	AGRI MAX 50.8 POWER X2	AGRI MAX 65.8 POWER X2	AGRI MAX 60.9 POWER X2
A	508 mm (20,0 in)	508 mm (20,0 in)	508 mm (20,0 in)
C	2850 mm (112,2 in)	2850 mm (112,2 in)	2850 mm (112,2 in)
D	1266 mm (49,8 in)	1266 mm (49,8 in)	1266 mm (49,8 in)
E1	2841 mm (111,9 in)	2841 mm (111,9 in)	2841 mm (111,9 in)
F	4767 mm (187,7 in)	4767 mm (187,7 in)	4767 mm (187,7 in)
G	5321 mm (209,5 in)	5321 mm (209,5 in)	5671 mm (223,3 in)
H	2608 mm (102,7 in)	2608 mm (102,7 in)	2608 mm (102,7 in)
I	960 mm (37,8 in)	960 mm (37,8 in)	960 mm (37,8 in)
K01	37 °	37 °	37 °
K03	10 °	10 °	10 °
K06	136 °	136 °	136 °
K07	16 °	16 °	16 °
K08	131 °	131 °	131 °
L	1950 mm (76,8 in)	1950 mm (76,8 in)	1950 mm (76,8 in)
M	2461 mm (96,9 in)	2461 mm (96,9 in)	2461 mm (96,9 in)
O1	6602 mm (259,9 in)	6602 mm (259,9 in)	6952 mm (273,7 in)
P	1348 mm (53,1 in)	1348 mm (53,1 in)	1348 mm (53,1 in)
P1	60 mm (2,4 in)	60 mm (2,4 in)	60 mm (2,4 in)
Q	4100 mm (161,4 in)	4100 mm (161,4 in)	4100 mm (161,4 in)
Q1	1200 mm (47,2 in)	1200 mm (47,2 in)	1200 mm (47,2 in)
R1	1200 mm (47,2 in)	1200 mm (47,2 in)	1200 mm (47,2 in)
S1	150 mm (5,9 in)	150 mm (5,9 in)	150 mm (5,9 in)
T1	4919 mm (193,7 in)	4919 mm (193,7 in)	4919 mm (193,7 in)
U1	3571 mm (140,6 in)	3571 mm (140,6 in)	3921 mm (154,4 in)
V1	8720 mm (343,3 in)	8720 mm (343,3 in)	9070 mm (357,1 in)



SCAN THE QR CODE FOR COMPLETE AND UPDATED DATA



CLICK FOR COMPLETE AND UPDATED DATA







## DTS

The **Dieci Telematic System** allows the Dieci service team to interact with the vehicle remotely. It telematically collects and sends operational data for easier and more timely **monitoring, diagnostics and maintenance**. **Vehicle and operators protected from theft and accidents thanks to GSM and GPS connections.**

## DIECI SERVICE

General headquarters in Emilia Romagna - over 135,000 square meters and about 400 people employed - and 3 branches in Germany, United Kingdom, France: Dieci is present in over 70 Countries with an **extensive network of over 600 dealers** and authorized service centers.

**Dieci Service**, our global technical assistance service, is developed on this basis: our customers are assisted directly by specialized technicians and every request is satisfied in a very short time. Dieci Service, **within a few hours, can provide interventions and spare parts all over the world.**

Visit [www.dieci.com](http://www.dieci.com) to find the dealer closest to you.

**600 DEALERS**

**70 COUNTRIES**

**3 BRANCHES**





# AGRI MAX POWER X2

50.8 | 65.8 | 60.9

INVICTO

**DIECI**

[www.dieci.com](http://www.dieci.com)



Ph: masterservicelorenz.it